

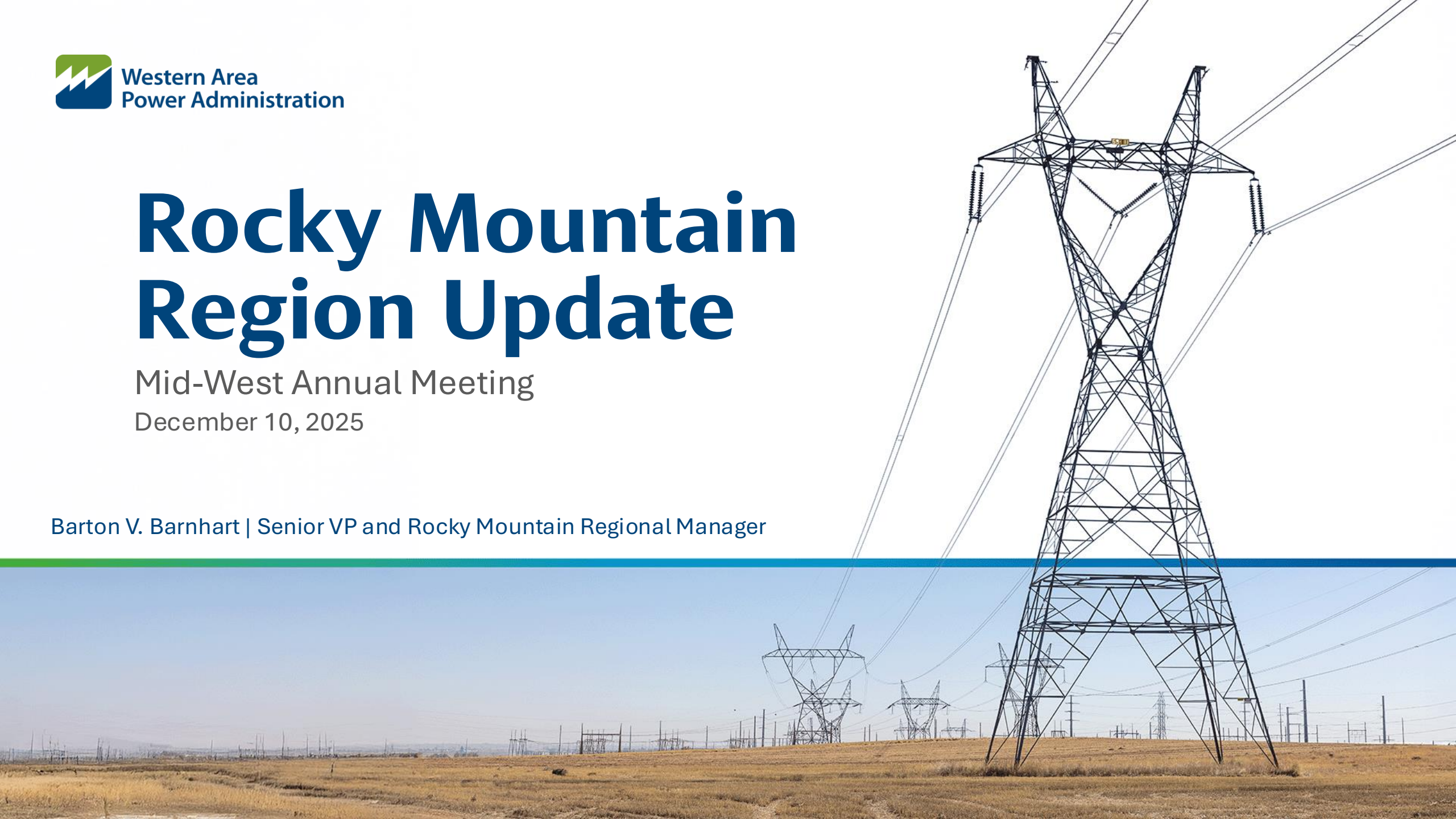


Western Area
Power Administration

Rocky Mountain Region Update

Mid-West Annual Meeting
December 10, 2025

Barton V. Barnhart | Senior VP and Rocky Mountain Regional Manager



Agenda

- Power Marketing
- RMR Leadership Changes
- Maintenance Priorities
- RMR Focus Areas
- LAP Water Conditions



Power Marketing – LAP FES Rates

- Current composite rate reminder
 - 1st step effective Jan 1, 2025
39.84 mil/kWh (+8.8%); incl. 2.40 mil/kWh drought adder
 - 2nd step effective Jan 1, 2026
43.10 mil/kWh (+8.2%); incl. 1.38 mil/kWh drought adder
- USBR generation model updates in early Nov
 - Incorporating updated purchase power/sales projections into FY25 PRS's
- Late March – receive FY28 workplans
 - Incorporate in FY26 PRS's – eval if 2nd step still adequate



LAP = Loveland Area Projects
FES = Firm Electric Service
USBR = US Bureau of Reclamation
PRS = Power Repayment Study

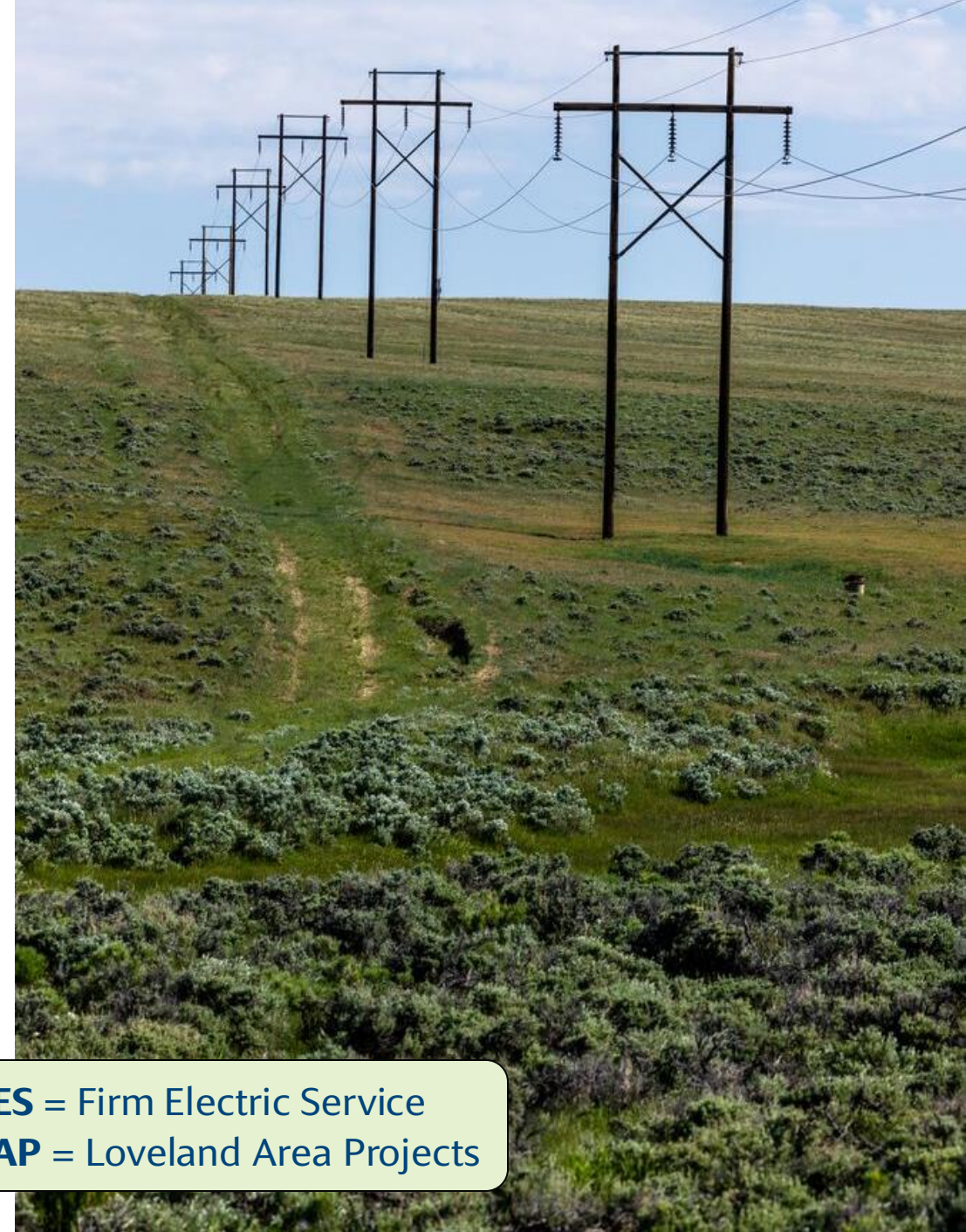


Power Marketing – Other News

- New 2025 FES contracts began Oct 1, 2024
 - 30-year term ends Sep 30, 2054
 - New Power Marketing Initiative started in 2011, *14 years of work!*
- With start of new contracts, LAP now has 12 new customers that receive the benefit of Federal Hydropower (9 KS, 2 NE, 1 CO)
 - Most new LAP customers since 2004
 - Now 132 Preference Customers + 12 project-use customers in CO, KS, NE, WY



FES = Firm Electric Service
LAP = Loveland Area Projects



RMR Leadership Changes

- **RMR Key Departures**

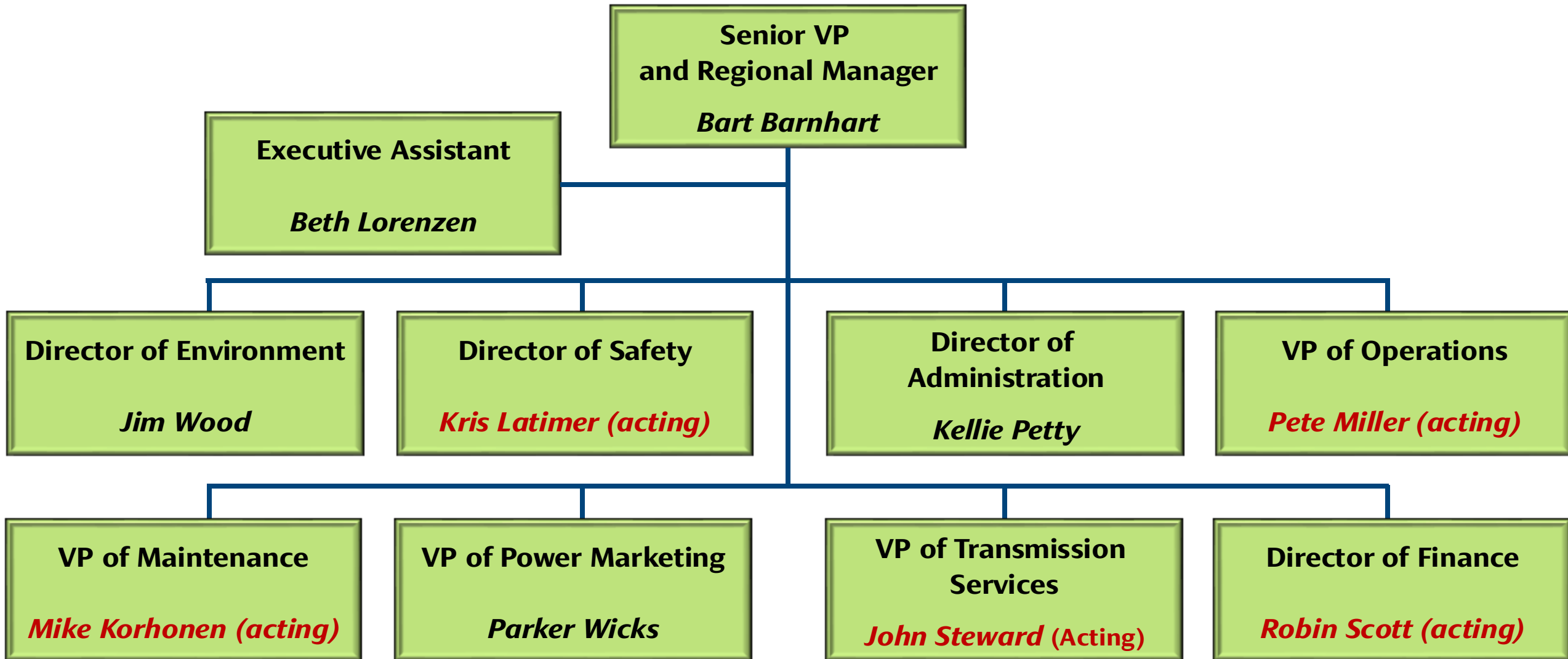
- **Ross Wiitanen** – VP of Maintenance
- **Jon Aust** – VP of Operations
- **Patrick Aston** – Director of Finance
- **Zea Flores** – VP of Transmission Services
- **Tim Duffy** – Director of Safety, last day Dec 13

- **Current RMR Acting Leaders**

- **Mike Korhonen** – VP of Maintenance
- **Pete Miller** – VP of Operations
- **Robin Scott** – Director of Finance
- **John Steward** – VP of Transmission Services
- **Kris Latimer** – Director of Safety



RMR Leadership Changes




RMR Maintenance Priorities

- **Focus on getting PMs done, first!** (especially NERC PMs)
 - RMR well on track to complete 2025 PMs, even in constrained manpower environment
 - **Problem:** Comm site generator PMs – EEC/Hvy Equip Mech shortfall
- **Then construction to extend system life**
 - Infrastructure workload growing across WAPA; evolve practices to avoid overloading shared resources
- **Work for others when possible**
 - Difficult if WAPA “shared services” needed – manpower bandwidth
 - Project: Burlington Northern Intermodal yard NE of Denver – shared services needed
 - Project: Colorado Power Pathways crossover of WAPA T-line along I-76 – shared services **not** needed
- **Hiring ongoing**
 - PMA’s granted relief from 4:1, but it will take time to return to steady state



RMR Focus Areas

- Maintain RMR/CRSP transmission systems
- Keep rates as low as possible
- Operate WACM/WALC BA's reliably and safely
- Navigate personnel bandwidth (safety, BA ops) and hiring, procurement and budget challenges
- RTO
 - Go live April 1, 2026
- Common SCADA (monitor/control the grid)



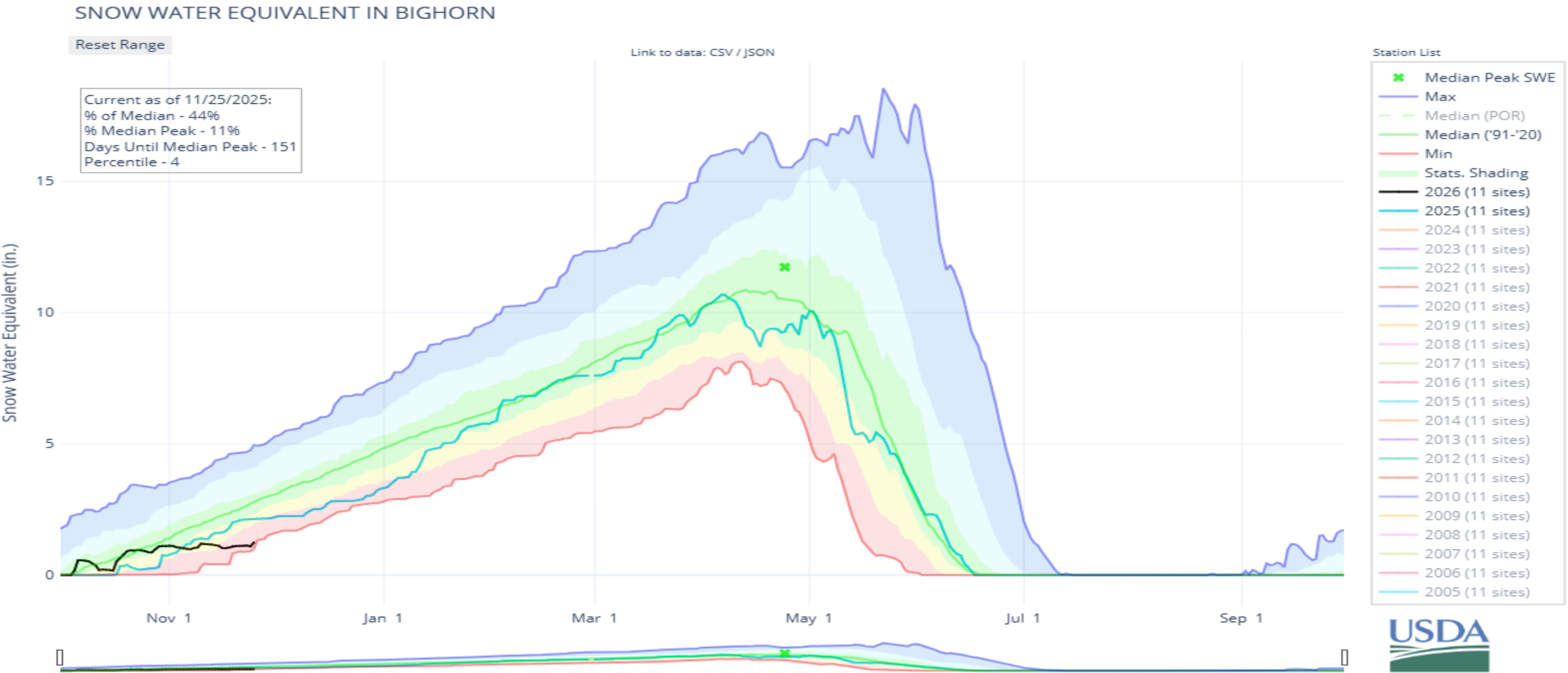
WACM = Western Area Colorado Missouri
WALC = Western Area Lower Colorado
RTO = Regional Transmission Organization
SCADA = Supervisory Control and Data Acquisition

LAP Water Conditions



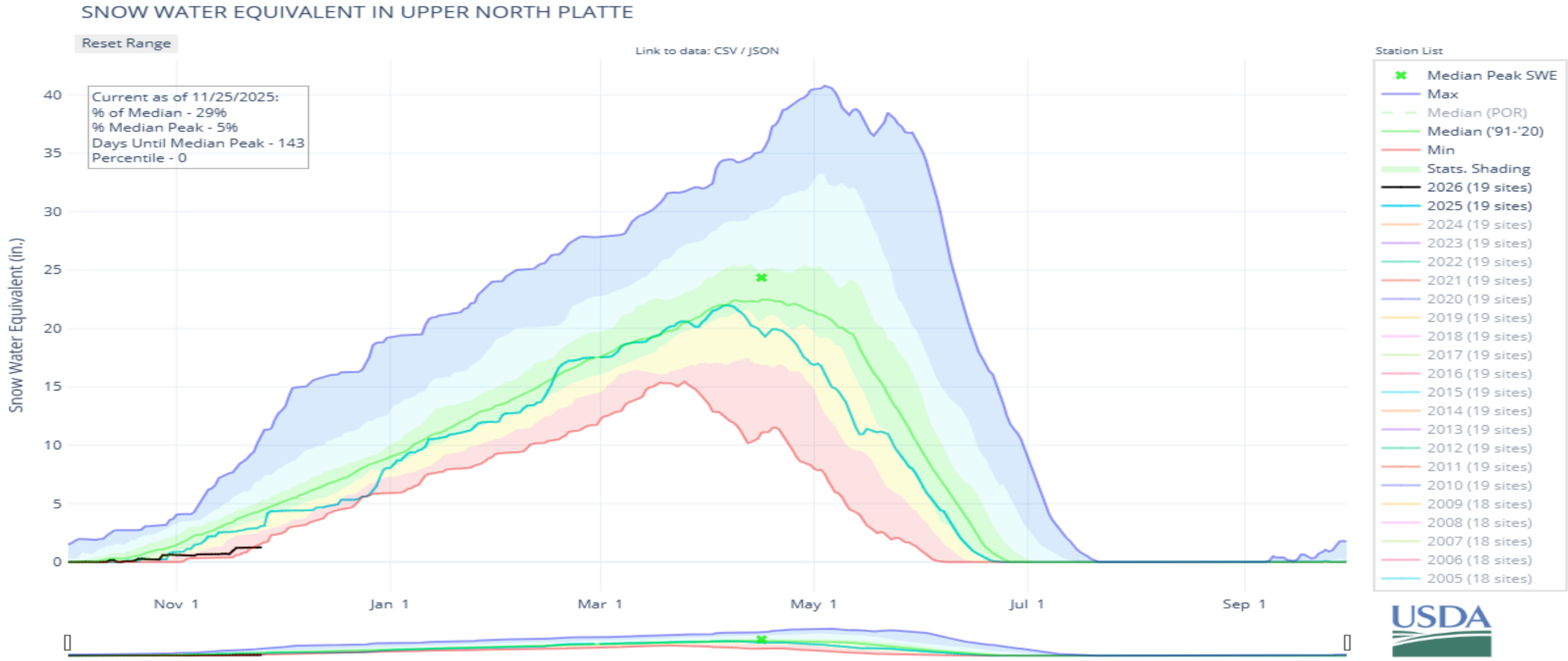
LAP Water Conditions

Big Horn Basin



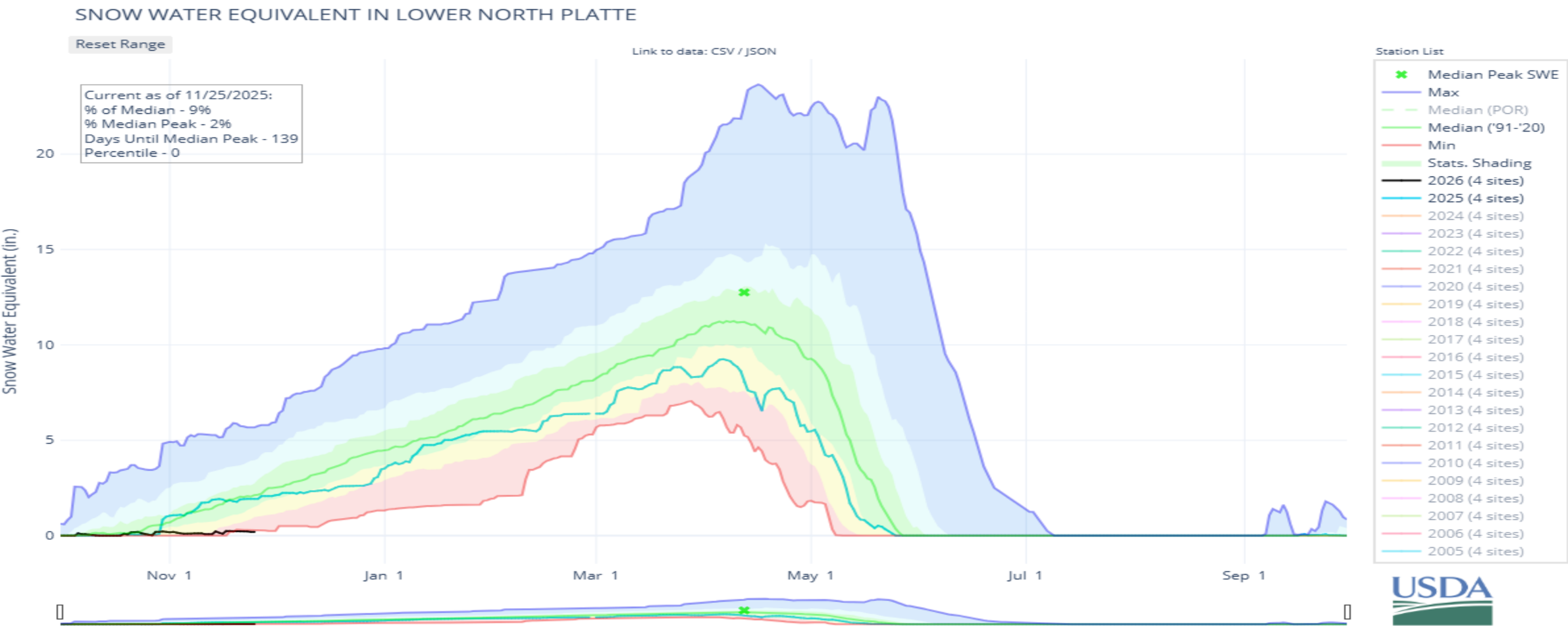
LAP Water Conditions

Upper North Platte Basin



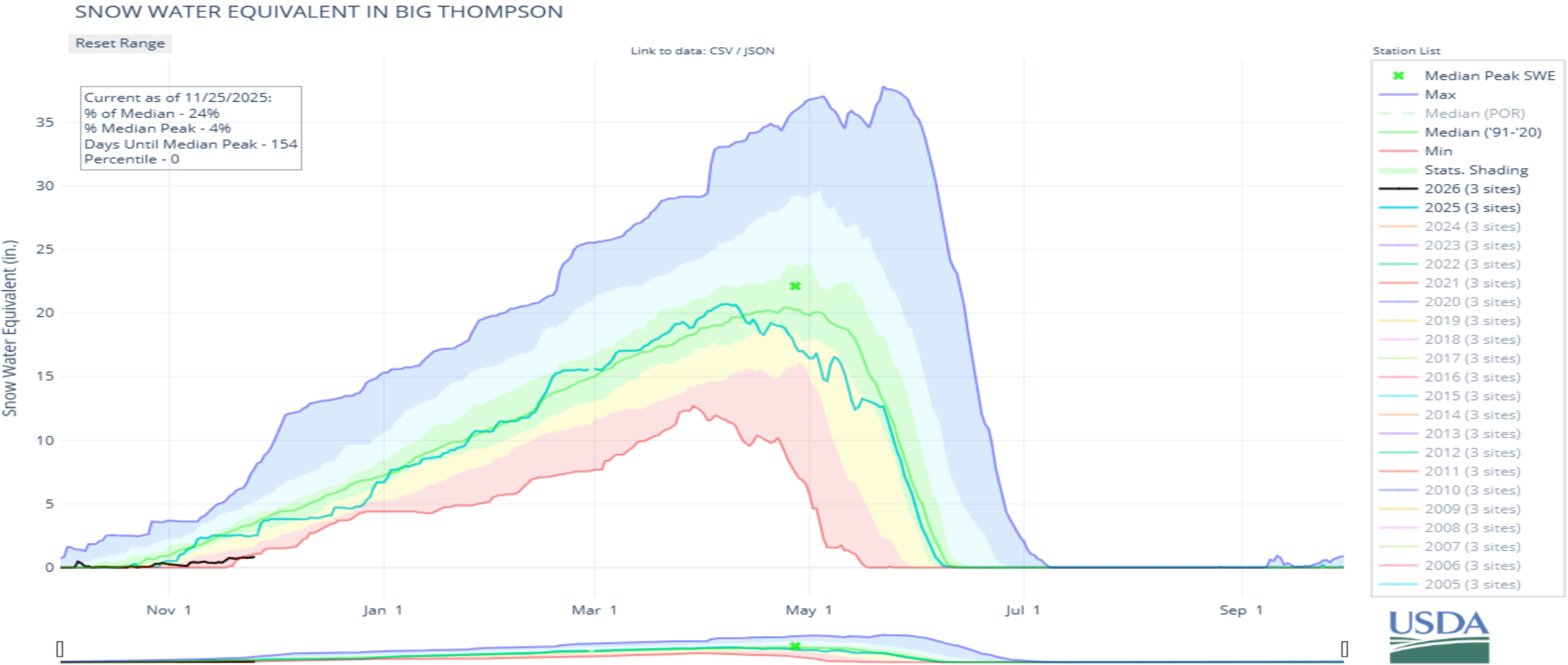
LAP Water Conditions

Lower North Platte Basin



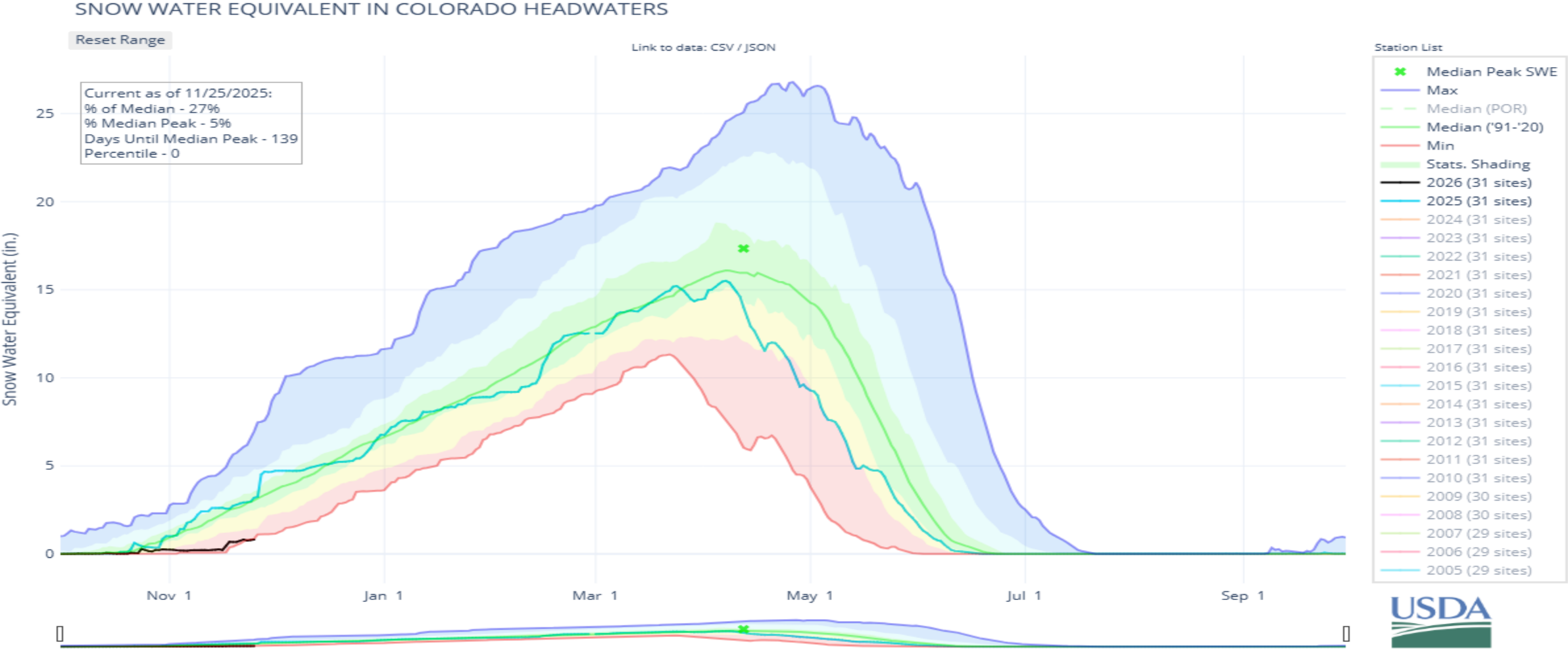
LAP Water Conditions

Big Thompson



LAP Water Conditions

Colorado Headwaters



Contact WAPA

Bart Barnhart

Senior VP and Rocky Mountain Regional Manager

(970) 415-3057

Barnhart@wapa.gov

WEBSITE

wapa.gov

LINKEDIN

[western-area-power-administration](https://www.linkedin.com/company/western-area-power-administration)

